

The Insider



LINN-BENTON COMMUNITY COLLEGE STAFF NEWSLETTER

College Receives Another \$1 Mil Towards Science and Health Project

Rita Cavin announced at the May Board of Education meeting that a second \$1 million anonymous donation was received for the Science and Health Project.

To date, the college has received a total of \$4 million in private donations toward the \$10 million project. The college will invest \$2.75 million toward the project and \$3.731 million will come from state capital construction funds.

LBCC will also receive a \$516,810 federal earmark to purchase equipment for the new building. Construction is slated to begin on the 27,000-square-foot building at the end of July.

Major donors to the project include several anonymous and many private gifts along with:

- \$500,000 from the Meyer Memorial Trust
- \$100,000 from the Spirit Mountain Community Fund
- \$100,000 from Samaritan Health Services
- \$100,000 from the LBCC Foundation
- \$80,000 from ATI Wah Chang
- \$50,000 from Weyerhaeuser Company Foundation
- \$50,000 from the Ann and Bill Swindells Charitable Trust
- \$30,000 from Starker Forests
- \$30,000 from the Oregon Community Foundation
- \$25,000 from OSU Federal, Your Community Credit Union
- \$25,000 from Central Willamette Credit Union
- \$25,000 from the Corvallis Clinic and Foundation
- \$10,000 from Citizens Bank
- \$10,000 from the PacificCorp Foundation
- \$5,000 from the Autzen Foundation

Here are a few quotes from these major donors:

“LBCC, just like OSU Federal, is community focused,” said Rick Hein, CEO of OSU Federal. “LBCC helps students realize their dreams and the Science and Health Project is critical to their success. We are very excited to be able to help LBCC take another step toward accomplishing their goal.”

Insurance Changes Coming

The college’s current health insurance coverage with Regence Blue Cross/Blue Shield Oregon through OSBA will end on September 30, 2008.

LBCC will be enrolling with Oregon Educators Benefit Board (OEBB), the entity created by the passage of SB 426 that established a state-run mandatory health insurance pool for K-12 schools and ESDs. Under this law, community colleges in Oregon are eligible to join the pool, but cannot opt out once in.

Although LBCC considered other solutions, it has now become apparent that joining OEBB is the only financially viable option. These plans will be in effect starting in October 2008. Open enrollment will be scheduled for August.

Detailed information about all of the plans offered can be found at: <http://www.oregon.gov/DAS/OEBB/index.shtml>.

“I am pleased that the House Appropriations Committee recognized the importance of enhancing LBCC’s ability to train the future health care providers and engineers our state and our country need,” said Congressman Peter DeFazio.

“Weyerhaeuser is thrilled to support LBCC’s Science and Health Project,” said Wayne Rieskamp, Weyerhaeuser Veneer marketing manager. “We strongly believe in the programs and services that LBCC provides to our local citizens. We have a long-term partnership with the college, and feel that it’s important to help support LBCC in this very important project.”

“It is well known that Native Americans have higher rates of diabetes and as a tribal foundation, we are proud to support programs that increase access to high quality health care for Oregon citizens,” said Shelley Hanson, Spirit Mountain Community Fund director.

“We view this project as critically important in helping to train our future health-care workers,” said Andrew Perry, CEO of The Corvallis Clinic. “The Corvallis Clinic, our Foundation, and LBCC have had a long partnership in providing health education resources that will help us maintain high quality health care services in our community. LBCC is a tremendous community asset who we value highly; it is our privilege to be able to strengthen our partnership with this gift.”

New Faces/Promotions

- **Gail Bartholomew**, Classified, replacing Alan Vitkus, Career and Employment Specialist, JOBS/LEDD, effective 05/12/08–06/30/08.
- **Donna James**, Management, replacing Linda Newell, Registrar and Student Information Systems Manager, Admissions/Records/Registration, temporary, fixed-term effective 05/02/08–06/30/08.
- **Susan Knapp**, Faculty, replacing Jennifer Knapp-Beudert, Education/Child and Family Studies, Family Resources and Education effective 07/01/08.
- **LeAnn Schamp**, Classified, replacing Arash Kamalinejad, Retail Accounting Technician, Bookstore, promoted from Clerical Specialist 3, Admissions/Records/Registration effective 05/27/08.

Good-byes/Leaves of Absence

- **Barbara Bessey**, Faculty, Training Specialist, Business and Employer Services effective 06/30/08.
- **Corleen Chang**, Classified, Events and Meetings Coordinator 1, Conference Services effective 06/30/08.
- **Judith Madarus**, Classified, Food Service Worker 2, Food Services, early retirement effective 07/01/08.
- **Angela Martinek**, Faculty, Mathematics, Math and Science Division effective 06/13/08.
- **Vikki Maurer**, Faculty, Mathematics, Math and Science Division effective 06/13/08.
- **Kevin Nicholson**, Management, Director, Facilities, early retirement effective 08/01/08.
- **Terrell Keen**, Management, Academic Affairs Specialist, Academic Affairs effective 07/15/08.

Honorable Mentions

- **Greg Hawk**, baseball coach and faculty, Health and Human Performance, was recently named Southern Region All-Stars Coach of the Year. His team also won the Southern Region Co-Championship this year, the school's first region win in 18 years. Way to go, Roadrunners and Coach Hawk!
- **Barb Horn**, tutor coordinator, was chosen to serve as president-elect for the regional chapter of the Northwest College Reading and Learning Association.
- **Janet Lodge**, executive assistant to the vice president of Academic Affairs, recently finished a master's of science degree in business education from Emporia State University. Kudos!

What's Happening?

- **Friday, June 6, Benton Center Studio Sale and Show, 3:30 to 5:30 p.m., North Patio, BC Ceramics Studio.** Mark your calendars for this annual pottery sale. Beautiful and functional pieces made by LBCC instructors and students will be offered for sale. Pieces are made using techniques such as high fire, raku, salt glaze and wood fire pottery. Choose from affordable functional art including vases, teapots, mugs, bowls, plates, platters and more. A portion of all sales goes to support the ceramics studio. For more information, contact the Benton Center at 757-8944.

- **Thursday, June 12, End of Term Reception, 9:30 a.m. to 11 a.m., Library/Learning Center.** Join in for some socializing and good eats and check out the Library and Learning Center.

2008/09 Performing Arts Line Up

Plays:

- Fall Play: David Mamet's "The Water Engine"
- Children's Play, Winter: E.B. White's classic "Charlotte's Web"
- Spring Play: Arthur Miller's drama "A View From the Bridge"

Travel at the Tripp Film Series:

- November 9, 2008 – Soul of India with Rick Ray
- January 25, 2009 – Experiencing New Zealand with Rick Howard
- March 29, 2009 – The Other Side of Mexico with Fran Reidelberger
- April 26, 2009 – Postcards from Italy with Steve McCurdy



Commencement
June 12, 7 p.m.
Linn County Fair & Expo Center
Albany Fairgrounds
Graduates should arrive
by 5:30 p.m.

**Have a great
summer!**



Part-time Faculty Honored

LBCC part-time faculty were honored at the annual Part-time Faculty Awards Dinner held in April. Winners were nominated by their peers in their respective divisions. Selection was based on their distinguished and exemplary instructional performance and individual contribution to excellence in education. The following faculty were honored:

Linda Baskerville – Benton Center

E. Juliane Conrad – Lebanon & Sweet Home Centers

Clifton Cooper – Math & Science

Erica Duncan – Albany Community Education

Patti Dunning – Business & Computer Systems

Deb Herrold – Exercise, Health Education & Public Safety

Michael Kinkade – Health Occupations & Workforce Education

Susan Knapp – Family Resources & Education

Kris Mitchell – Benton Center Community Education

Aurore Morley – Lebanon & Sweet Home Centers

Greg Rathert – Arts & Communication

Deborah Sears-Richman – Student Services

Fred Stuewe – Engineering & Industrial Technology

Jane Wille – Academic Development & Library Services

Faculty Consultant for MC Issues

Callie Palmer has been appointed to the new position of faculty consultant for multicultural issues.

Callie currently teaches writing and literature. She will lead college wide initiatives around embedding cultural diversity curricular elements and opening multicultural related issues and discussion in the classroom.

Callie will begin her work in this newlyformed role in the fall, when she will be ready to assist faculty with multicultural issues within their individual class curricula.



Callie Palmer

Women's Basketball Coach Named

Teresa Guerra was named Head Coach for LBCC's women's basketball team. Before coming to LBCC, she served as the head varsity coach for the Lakeview High School girl's basketball team for three years.

Guerra played junior college basketball for two years in California, and played one year at Eastern Oregon University. She has a master's in teacher education from Eastern Oregon University and a bachelor of science in Physical Education/Health from Eastern Oregon University. Teresa was previously employed as a physical education teacher for grades 7-12 at Lakeview High School.

Mike Holland Slated to Decrease Local Trout Population

Mike Holland, vice president of Administrative and Student Affairs, is slated to retire June 30.

Mike has served in his position at the college for more than 13 years. Throughout his tenure, he has guided the college through administrative, budgetary and legislative challenges while being available to assist students, staff and departments

with their needs. According to the college grapevine, Mike's plans for life after LBCC include an endeavour to help "decrease the local trout population." No wonder fishing sounds good about now! He also plans to travel.

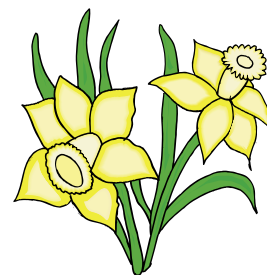
Mike has served more than 30 years in the education field, including six years as the first Oregon state commissioner in the Office of Community College Services in Salem. He also served as a high school teacher in Glide, the director of admissions at Marylhurst College, associate dean at Willamette University College of Law, and president of the Community College of Vermont.

Although he plans to stay on part-time as a consultant for the college, his daily leadership and his inclusive nature along with his quick wit and sense of humor will be missed.



Mike Holland

**Lebanon Center
Reduces Tuition for
Summer Term–
\$40 per credit–
Spread the news!!!**



The Lebanon Center is offering a tuition reduction of \$40 per credit hour for classes held at the Lebanon Center only.

The Lebanon Center offers numerous general education and transfer classes to help students get a jump on college credits. The center also offers college prep courses. Summer classes include computer and business technology classes and practical accounting classes that are popular with individuals currently in or returning to the workforce.

"The summer credit tuition reduction in Lebanon is a collegewide effort to introduce more individuals to LBCC and the Lebanon Center," said Dawn McNannay, director of the Linn centers. For more information on LBCC's Lebanon Center tuition reduction, contact the Lebanon Center at 259-5801.

Student Named Copper Chef

Second-year Culinary Arts major Michael Cross was crowned “2008 Copper Chef” at a competition held in April in the Commons kitchen.

Cross competed against second-year culinary students Andrew Amerson, Katie Hardy, Jessi Greenfield and Jonathan Jones.

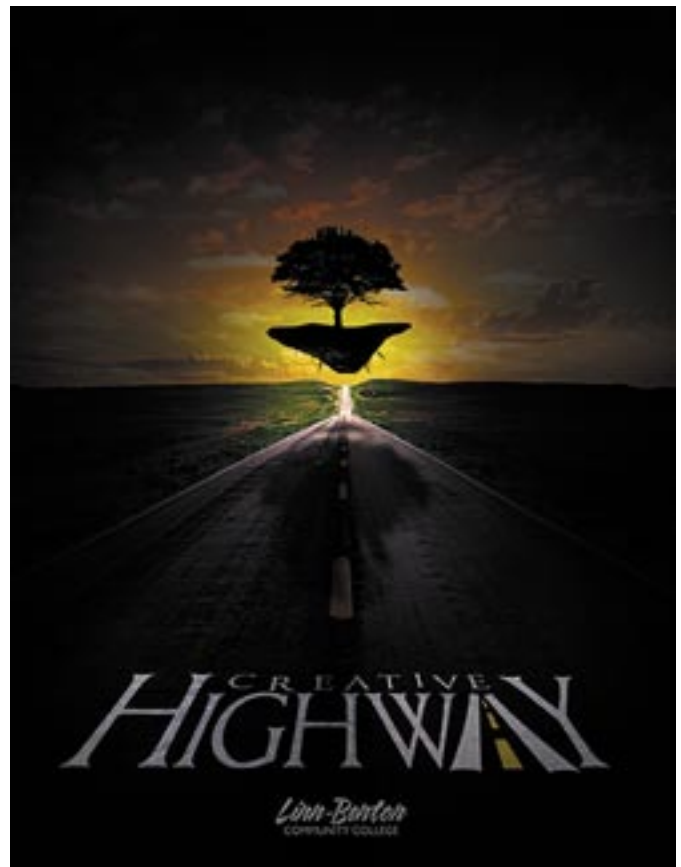
The Copper Chef competition is a way for first- and second-year culinary arts students to test their ability to create dishes with limited ingredients and no formal recipe.

As on the cooking show “Iron Chef”, the competitors have 90 minutes to make a dish using any of the fresh ingredients supplied plus any shelf-stable ingredients such as canned veggies, fruit, liqueurs, and rice.

This year’s ingredient list included beef ranch tender, milk, cream, feta cheese, onions, celery, carrot, potato, garlic, ginger, apple, orange, coffee, zucchini, yellow squash, herbs, beef stock, lime, green beans and red leaf lettuce.

Each student made a starter and entree. The winning starter made by Cross was a baked red wine poached apple with cherries, raisins and red wine caramel sauce. His winning entree was Chinese marinated ranch tender over coconut rice with stir-fried vegetables.

Cross won copper paella pan, traditionally used to make a Spanish rice dish. He will complete his culinary training this term.



CREATIVE HIGHWAY

Students, staff, faculty, and the community contributed to making this year’s edition of LBCC’s ezine, Creative Highway, a success.

The art and literary ezine is a learning tool used in the Literary Publications and the Editing and Publishing writing classes. Each year, students from the publications class select the content for the ezine from submissions. The editing class is in charge of design and production of the ezine.

The ezine can be viewed online at <http://aws.linnbenton.edu/ezine> and in hard copy at www.lulu.com. For more information, contact faculty advisor Natalie Daley at ext. 4573.



Michael Cross, 2008 LBCC Copper Chef Winner

The Insider is published monthly by College Advancement (no issues in December, July or August).

Send all inquiries, story ideas, honorable mentions, department or division achievements or awards, suggestions or feedback to:

Lori Fluge-Brunker, Publications Assistant, Insider editor
or Marlene Propst, Director, College Advancement